

CND™

Step-By-Step Guide

CND™ 5-Point Polish Method

Enhance service and speed with a streamlined and consistent application method for any color service. **The CND™ 5-Point Polish Method** is an easy, systematic approach for polish perfection.

CND™ PRODUCTS REQUIRED

CND™ SHELLAC™ Gel Polish*

- Base Coat
- Color Coat
- Top Coat

CND™ VINYLUX™ Long Wear Polish*

- Color Coat
- Top Coat

ACCESSORIES/EQUIPMENT REQUIRED

CND™ LED Lamp*

Hand towels

*Optional

PRO TIPS:

When using CND™ VINYLUX™ Long Wear Polish, lighten the touch and float the brush over the surface of the nail; with CND™ SHELLAC™ Gel Polish, intensify the touch and flatten the brush to the nail keeping all layers thin and even.

Step 1 SEAL THE EDGE

Sealing the edge of the nail first eliminates product build-up during service and provides a perfect seal, even on the shortest nails.

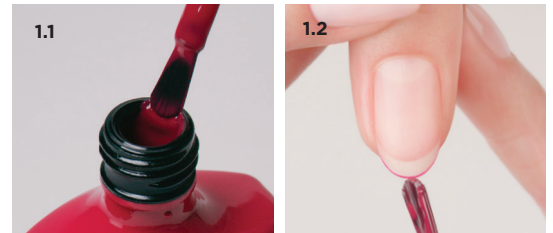
1. Pull coated brush from bottle. Wipe both sides on neck to remove excess polish while flattening brush hairs on both sides.
2. With the flattened brush, color a thin line along the free edge of the nail to seal and ensure complete coverage.



Step 2 BEAD IN THE MIDDLE

Placing the brush in the center of the nail first, eliminates flooding the cuticle line with polish, and provides precise application and coverage.

1. Pull brush from bottle scooping a small bead onto one side. Flatten and drain other side on bottle's neck.
2. Place bead in center of nail, and glide it down to the free edge. Lift brush up, angle finger down and ease brush towards cuticle line, putting slight pressure on brush. Glide brush towards free edge to complete center coverage.



Step 3 ROTATE RIGHT

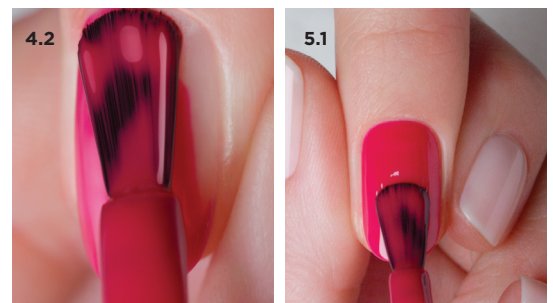
Note: Do not re-dip the brush. The bead created in the previous step should be large enough to coat the entire nail.

1. Rotate finger right, and pull back lateral fold so left side of nail is clearly visible.
2. Using left side of brush, apply color over left side of nail, following contour of sidewall as closely as possible from cuticle line to free edge.



Step 4 ROTATE LEFT

1. Rotate finger left, and pull back lateral fold so right side of nail is clearly visible.
2. Using right side of brush, apply color over right side of nail, following contour of sidewall as closely as possible from cuticle line to free edge.



Step 5 REPEAT & REFINE

1. Repeat and refine with each layer of color to provide additional coverage, refining and perfecting the tiny free margin.